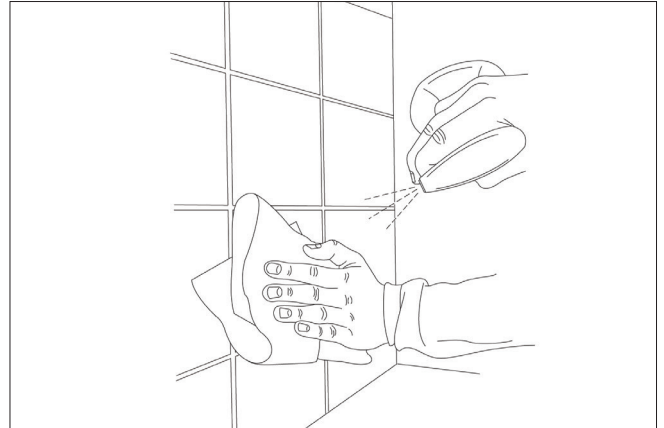


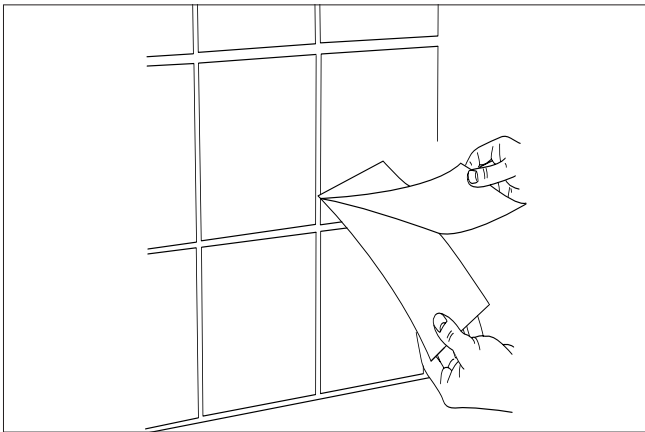
# HOW TO APPLY WALL POPS SELF-ADHESIVE WALL TILES

## YOU WILL NEED:

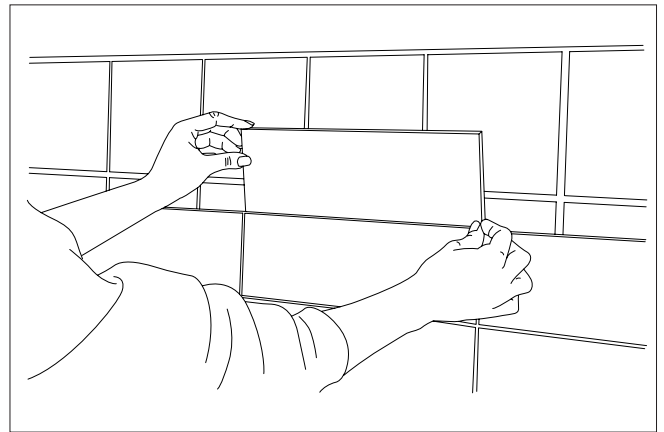
- Cloth
- Tape measure or ruler
- Cutting tool
- Pencil
- Spirit Level



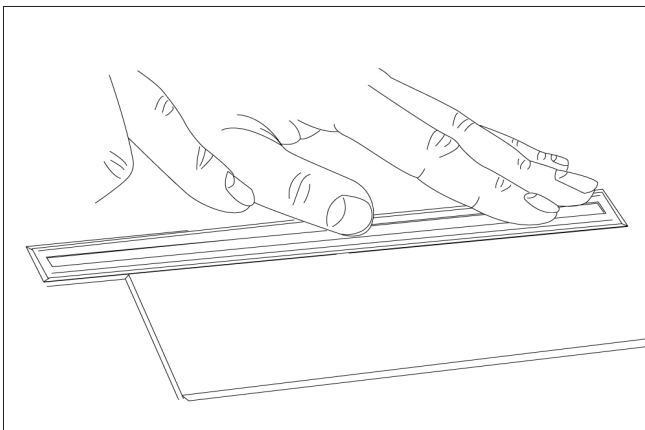
1. Clean the surface thoroughly to remove any grease or dirt. Wait 4 weeks before applying to newly painted surfaces (the tiles will not adhere to non-stick paint).



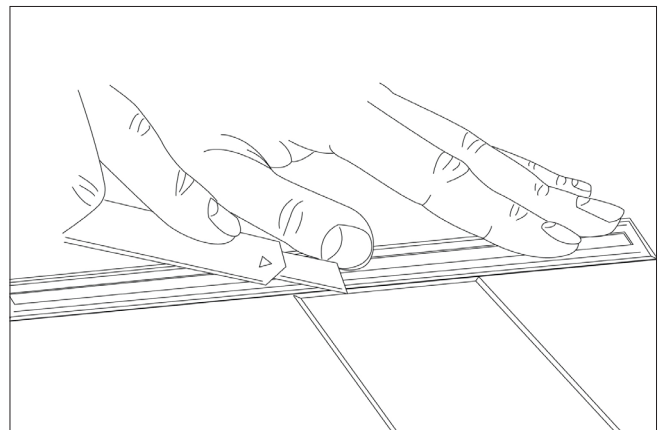
2. Peel back the backing paper to reveal the self-adhesive side. Avoid touching the adhesive as dust, dirt or oils may affect adhesion.



3. Draw a horizontal line to aid application then stick the tiles into place. Subway tiles can be stacked horizontally, vertically or in a herringbone pattern!



4. If you need to cut the tile, measure where the cut needs to be and mark on backing paper.

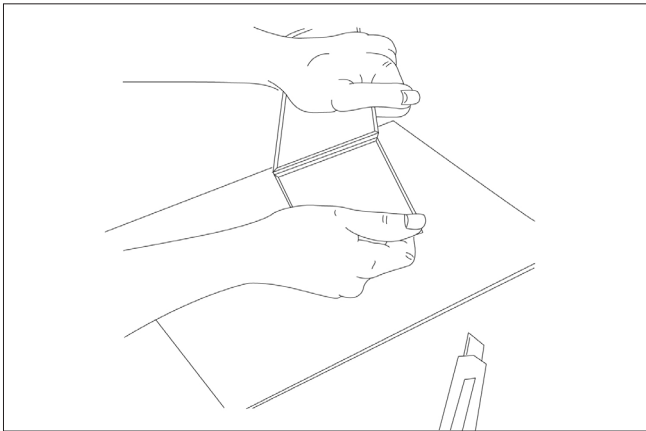


5. Score

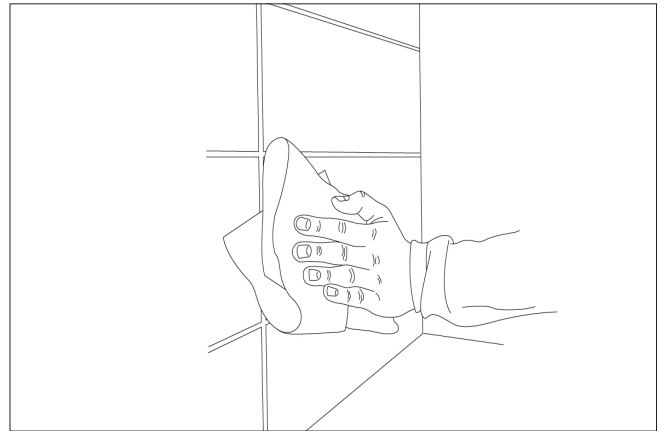
Use over flat tiles or on painted walls. The rigid vinyl tiles can be applied over any size tile and will stop any grout lines showing through.



## HOW TO APPLY WALL POPS SELF-ADHESIVE WALL TILES



6. Snap



**DURABLE WIPE CLEAN SURFACE!**

Use over flat tiles or on painted walls. The rigid vinyl tiles can be applied over any size tile and will stop any grout lines showing through.