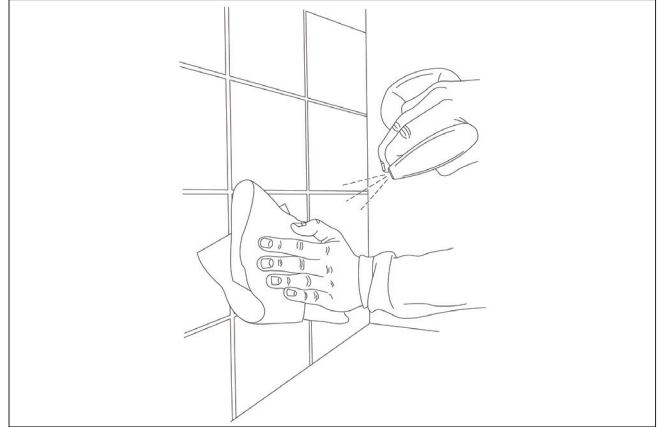


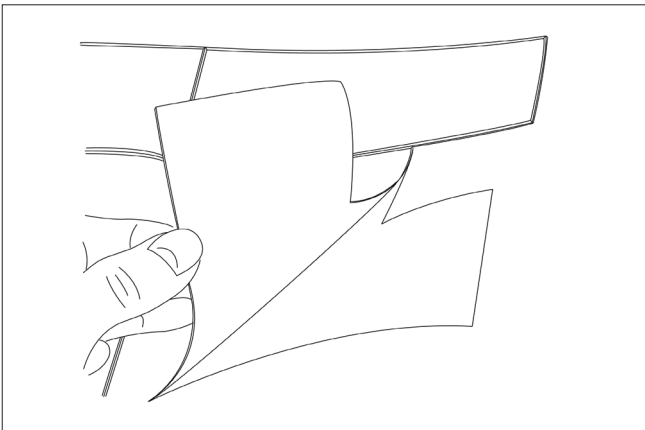
HOW TO APPLY SELF-ADHESIVE PREMIUM COMPOSITE WALL TILES

YOU WILL NEED:

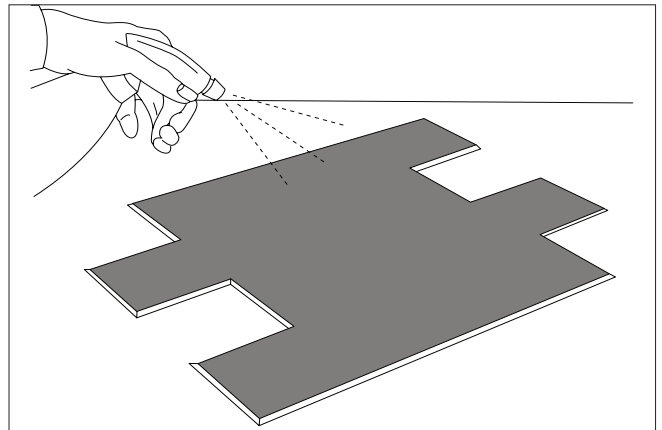
- Utility knife
- Cloth
- Water spray bottle
- Measuring tape
- Metal ruler or straight edge



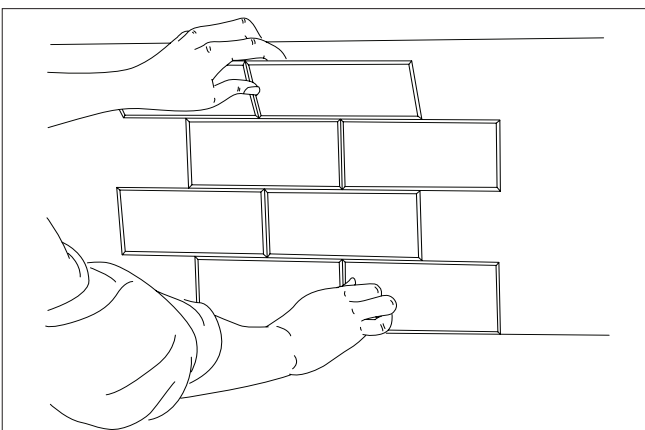
1. Clean the surface thoroughly to remove any grease or dirt.



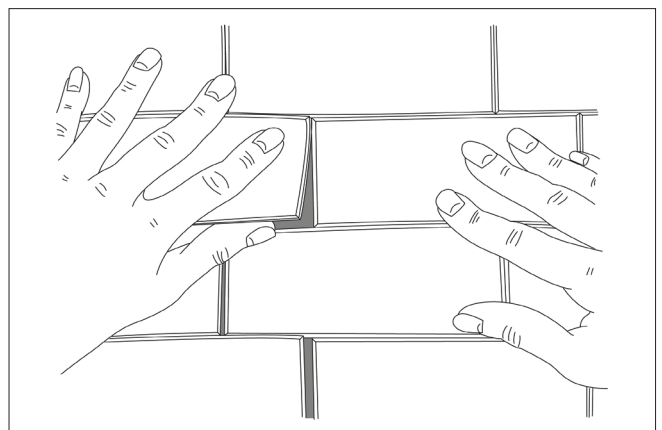
2. Peel back the backing paper to reveal the adhesive side.



3. Spray the reverse of the tile with water (this helps for repositioning the tile).

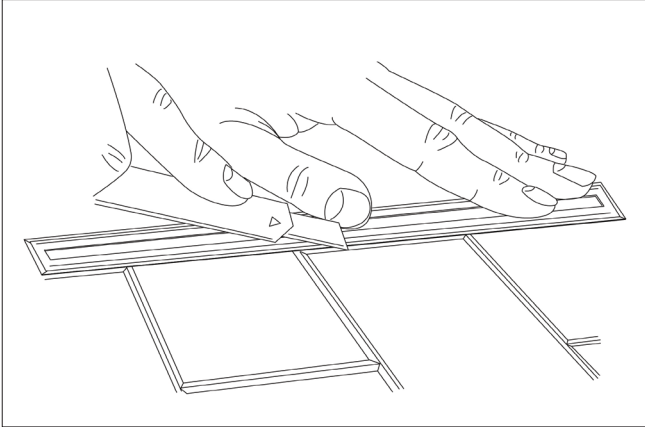


4. Stick the tile gently into place, it can be repositioned if you make an error.

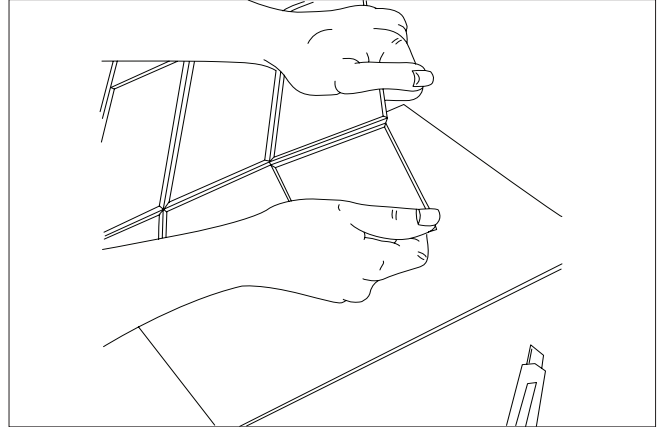


5. The tiles interlink together, make sure there is no gap.

HOW TO APPLY SELF-ADHESIVE PREMIUM COMPOSITE WALL TILES



6. The tiles can be cut for going around sockets very easily, score them using a utility knife.



7. Once scored, they can be snapped back as shown.