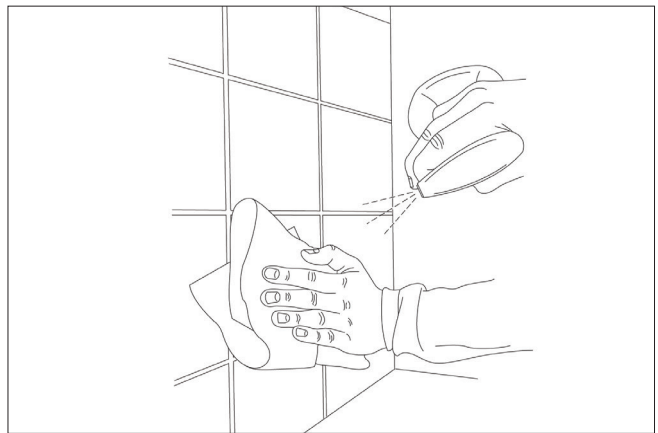


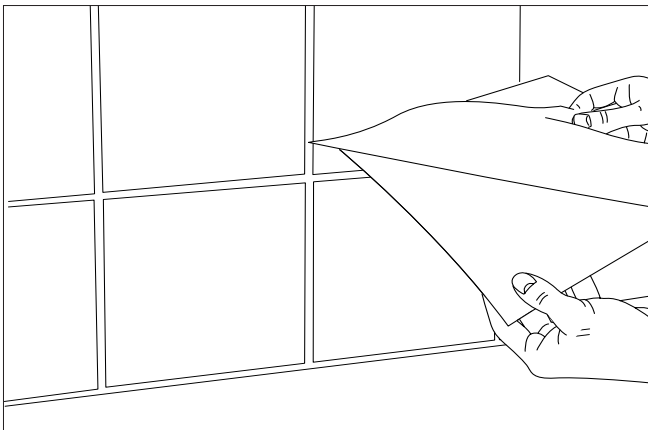
HOW TO APPLY 15CM SELF ADHESIVE WALL TILES

YOU WILL NEED:

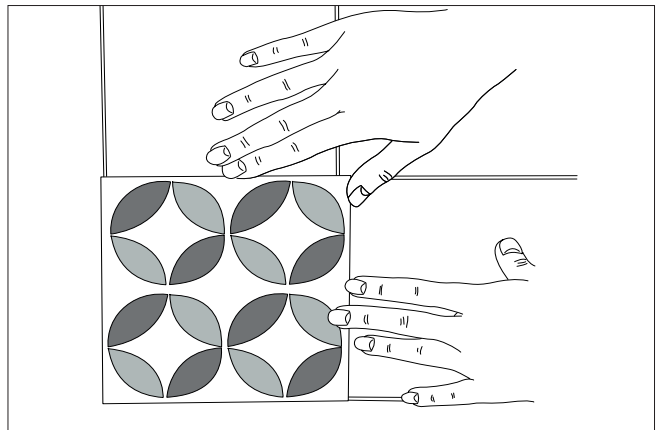
- Tape measure or ruler
- Pencil
- Cloth
- Utility knife



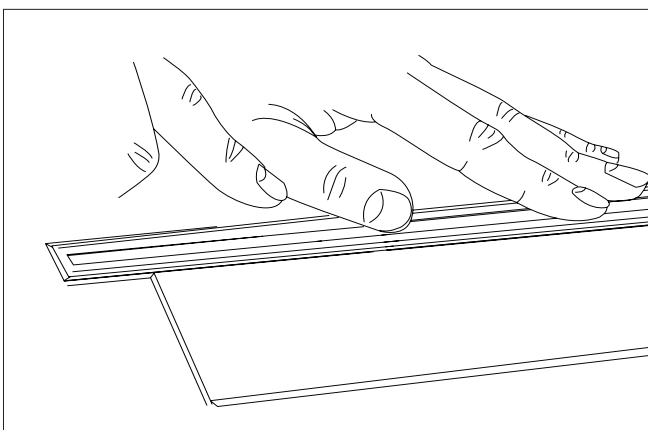
1. Clean the surface



2. Peel away backing paper

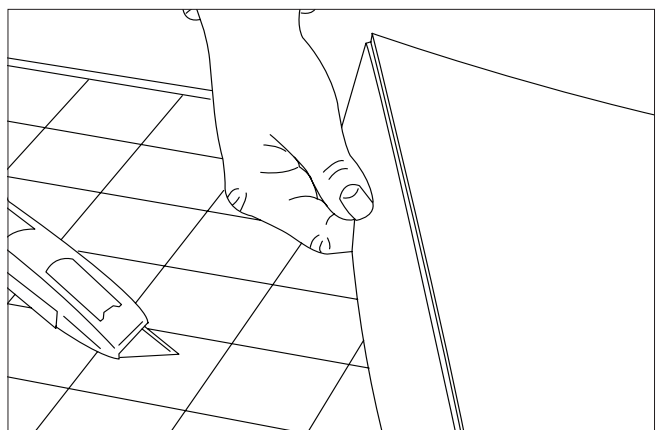


3. Stick into place



4. If you need to cut the tile...

Measure where the cut needs to be and mark on backing paper.



5. Score and snap

Use over flat tiles or on painted walls. The rigid vinyl tiles can be applied over any size tile and will stop any grout lines showing through.