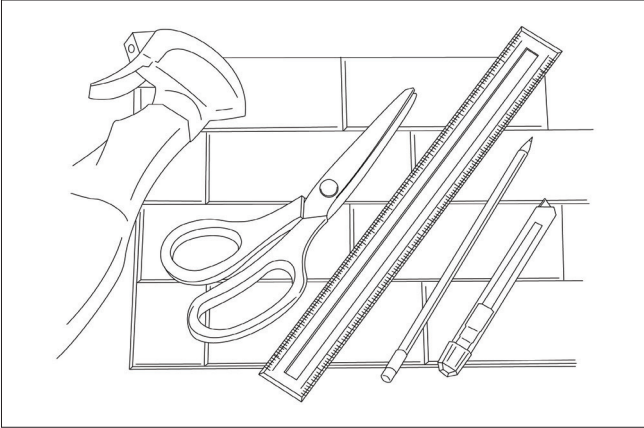
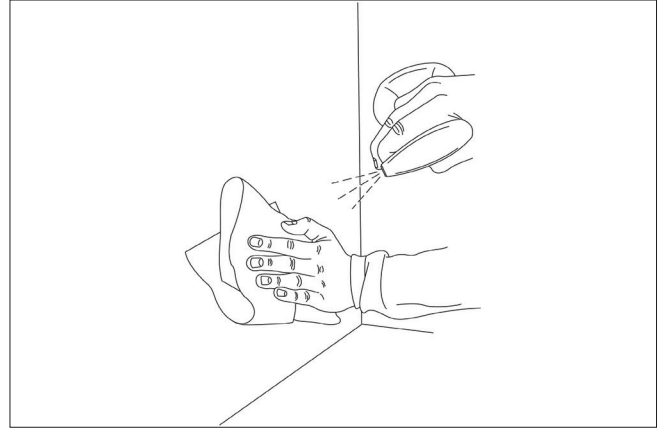


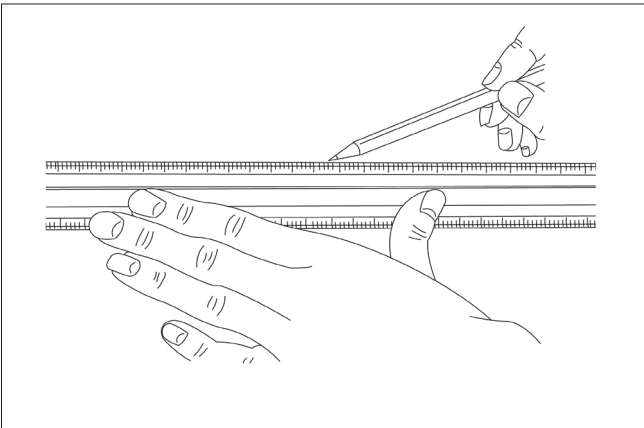
HOW TO APPLY 3D TILES



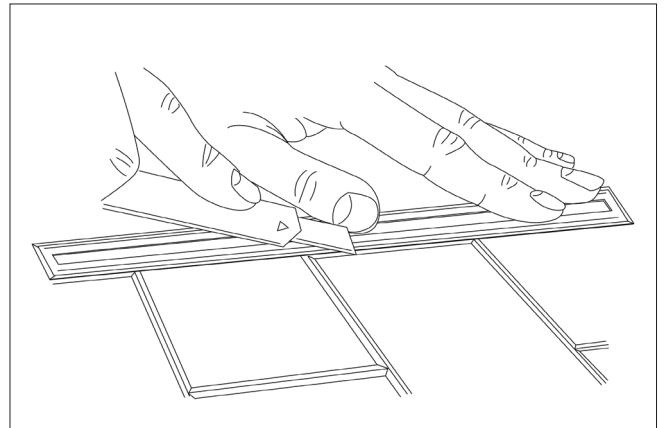
1. Tools for the job



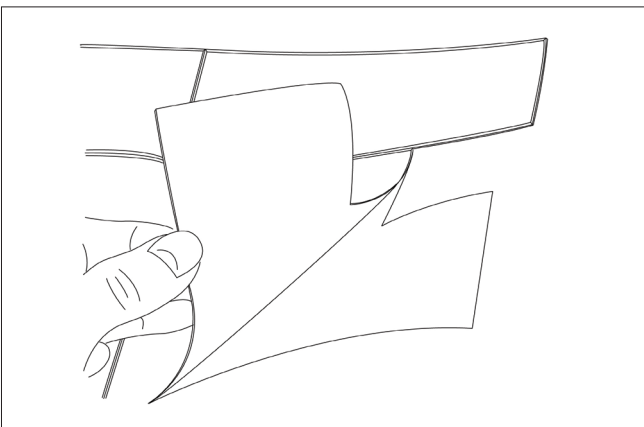
2. Clean surface



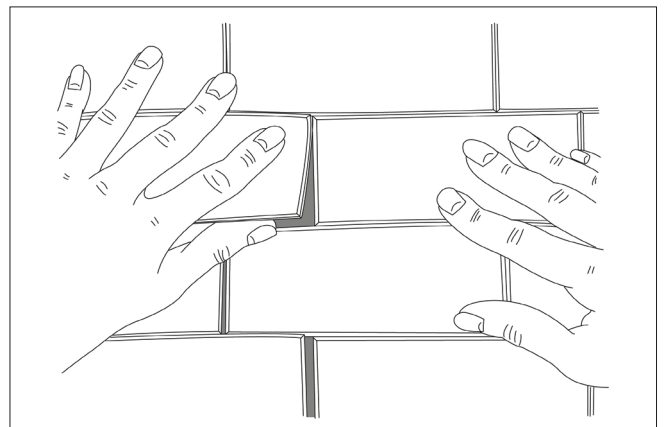
3. Draw a level line



4. Cut with scalpel

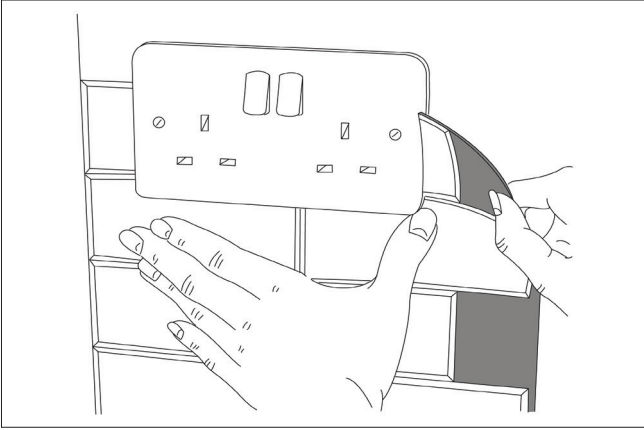


5. Peel away backing paper

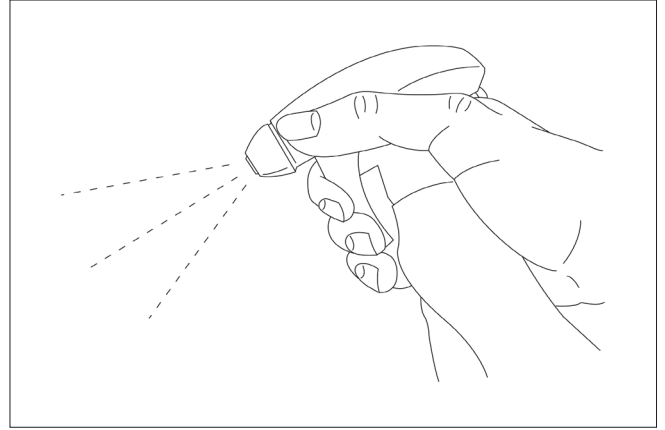


6. Overlap the tiles with each other to give brick effect

HOW TO APPLY 3D TILES



7. Cut out a section to fit around sockets



8. Tip – if applying over existing tiles, spray water to help the sticker glide into place